



Times Past

Shrewsbury Historical Society
Newsletter

2017 Museum Collections



Above exhibit showing Cuttingsville's RR depot sign donated by Gagnon Lumber. The depot was established in the mid 1800s and demolished in the 1950s.



The vestibule is graced by an 1800s spinning wheel, donated by Nathaniel Bailey and family of Shrewsbury.



1851 Friendship Quilt of Caroline Celista Holden who wed Samuel Franklin Smith. Anonymous donor.

President's Note

On Aug. 6, 2017, the Society assisted in celebrating a reunion of students who attended the Cuttingsville one-room schoolhouse (now the library). Those attending delighted in sharing stories and seeing old photos and school memorabilia in our collection at the museum.

A jolly and successful Bake Sale took place on Aug. 26th. And the Shrewsbury Memories 2018 calendar became available in October. It's a beauty. Mary Ann Pratt Snyder, who grew up in Cuttingsville, sent a note of thanks for the opportunity to see a photo of her grandmother. She had died when Mary Ann's father (Carl Pratt) was a child, and so she never knew her and had never seen a picture of her. Each year the creators of the calendar select 15 old (sometimes current, too!) Shrewsbury photos from our vast collection.

Thank you to our officers, trustees, committees and members for your support and stewardship of the Society, and for the maintenance of its gem of a museum.

Best wishes to Shrewsbury folks of all ages, who participate in our town's continuing history.

Grace Brigham, President

SHS OFFICERS FOR 2018

At the annual meeting held Oct. 17, 2017, the following officers were elected for 2018: President: Grace Brigham, Treasurer: John Elwert, Secretary: Grace Korzun and Ruth Winkler, Corresponding Secretary. Two Trustees voted in for a 3-year term: Ann Ridlon and Brian Winkler.

Officers and Trustees 2017

<i>President</i>	Grace Brigham
<i>Vice-President</i>	Marguerite Ponton
<i>Treasurer</i>	John Elwert
<i>Secretary</i>	Ruth Winkler

Trustees

Grace Korzun	Julanne Sharrow
Ann Ridlon	Brian Winkler
Margaret Field	Ann Vanneman

Honorary Trustees:

Bud Clark and Nancy (Anne) Spencer

Newsletter Editors

Ruth Winkler Brian Winkler

Photographer Brian Winkler

ruthcon1@vermontel.net

Please visit our website at:

www.shrewsburyhistoricalsociety.com

Shrewsbury Historical Society, Inc.

An all-volunteer non-profit organization

5419 Route 103

Cuttingsville, Vermont 05738

In Memoriam

Irene Cook, former resident of Cuttingsville, wife of Edward J. Cook, now deceased, passed away on July 30th, 2017. Ed and Irene were Life Members of the Society. Through the years, the Society has received artifacts from the Cook family, among which are the "Letters to Home" written by George Wellington Foster as he served in the Civil War.

Stirling Klein, former Life Member and resident of Shrewsbury, passed away early August, 2017. Stirling had been living at The Meadows Assisted Living for several years since the passing of his wife, Edna. Stirling was a talented musician. Who can forget the Christmas carols and lighting of the Remembrance Tree at the Olde Barn in Cuttingsville as he played his trumpet while Edna turned the pages of his music.

Bill Clancy, former Life Member and resident of Shrewsbury Center, passed away unexpectedly in October.



Merrill (Bud) Clark, former Life Member and resident of Shrewsbury, and of late at The Maples in Rutland with wife, Edie, passed away on August 20th, 2017 as a result of a devastating fall. Bud was 96 years old. He was a Lister for the Town, volunteered at the Rutland Regional Hospital, drove folks who needed rides, and was a master carpenter, building his own home in Shrewsbury Center plus some of its furnishings. Bud also enjoyed motorcycling, mowing his and neighbor's lawns, and fixing things. During the years as a member of the Society, he was an Honorary Trustee for 7 years, Vice President for 3 years, Trustee for 3 years, and held the office of Treasurer for 17 years. As a member of the House committee church/building, he pointed out the historic building's elaborate door knobs and tin ceilings and walls of the vestibule. It was his idea to have the front door of the museum painted with contrasting colors of green, which is attractive and reminiscent of an earlier time. Bud also helped the plant and bake sales the Society conducted by donating his beautiful Iris plants.

The Children's Corner



Children's Perambulator, ca. 1800s, donated by Florence Kaempf. Cart originally owned by the Lyman Russell family. It might have been pulled by a goat, pony or even a dog.



Wicker doll carriage, donated by Joanne Smith.



Enclosed glass cabinet displays a miniature telescope, tea set, games, books and handmade airplanes.



Also, Kewpie dolls, a locomotive, a miniature sewing machine, a slate, lead soldiers, books and a hand made sled.

Military History



Revolutionary War canteen, donated by Edna Earl Noyes Martyn. Owned by Abraham Eaton, 1775 Minuteman.



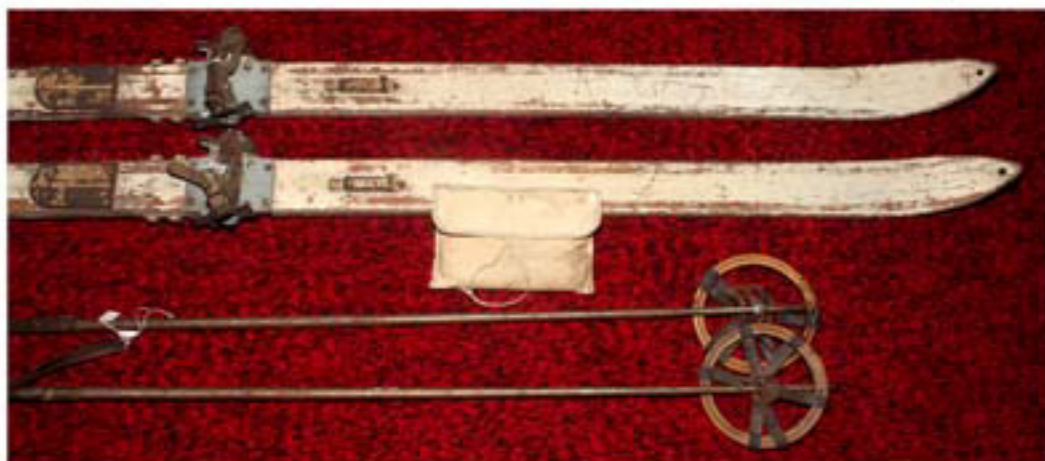
Civil War-themed album belonged to Edwin Pierce, who fought in the Repulse of Pickett's Charge, Gettysburg.



Letters to Home from Civil War drummer George Wellington Foster, donated by Edward Cook's family. Cup and cap box donated by Lynn McDermott. Civil War sword donated by Sally Jones.



World War II uniform and memorabilia of the Pierce family.



Mountain Division skis, poles and tool kit used by a Vermonter in World War II. Donated by Mitch Spencer.

GIFTS TO SHS 2017

Pittsford Historical Society, Pittsford VT: hand written black binder book, "Shrewsbury Road Surveys, 1785 - 1834".

Joan V. Stewart, Cuttingsville: Friendship Quilt, originally belonged to Caroline Celistia Holden who married Samuel Franklin Smith on Jan. 15, 1851.

Ruth Winkler, Cuttingsville: small photo album of Ladies Aid/Club, 1989 - 2000.

Kathy Clancy, Shrewsbury: paper collection of her father, Charles Davis, re: Crown Point Road.

B-J Stewart, Cuttingsville: Minutes of Shrewsbury Telephone Co., 1950s, 2 books of stockholders records from 1906 on.

Mr. & Mrs. Nate Bailey, Shrewsbury: Brook Green Farm spinning wheel, found in attic of former 1857 farmhouse, now the Bailey residence.

Grace Korzun, Shrewsbury: photos and notes of Korzun family.

Grace Brigham, Cuttingsville: Booklet, "Mount Holly, Its Early Days" by James F. Holden, 1912-1994.

Mr. & Mrs. Joe Patten, Rockland, ME: School exhibits from former Crowley family.

Margaret Field, Cuttingsville: one-room school house photos from Bruce LaPointe's scrapbook, copied and in special reunion album of 2017.

Kim Ridlon, Cuttingsville: large fall and winter photographs of Brown Bridge.

Joan V. Stewart, Cuttingsville: vintage children's dresses and baby bonnet.

Carole Cook Hass, Montpelier, VT: boxed artifacts pertaining to the Edward J. Cook family.

Liesbeth Van Der Heijden, Shrewsbury: glass display case, formerly on loan for exhibits.

Fran Patten Bettelli, Newton, NJ: book, "Vermont People" by Peter Miller.

Note from the Co-Editors: It is with great pleasure that our annual Past Times for 2017 is exhibited here in color as a tribute to the many artifacts that have been received from Shrewsbury families through the years. From its formation in 1971, the Shrewsbury Historical Society opened its first museum on the 2nd floor of the now-library in 1984 for 15 years, thence to the deeded historic church building museum in Cuttingsville which opened in 1999, the SHS has preserved Shrewsbury's history and herein we proudly display just a portion of the collection



*Reunion of Cuttingsville one-room school students held in library
August, 2017.*

Help Preserve Shrewsbury's History

Shrewsbury Historical Society's

2018 Annual Dues Request

The Society has come a long way in helping to preserve artifacts and display them for everyone to enjoy. Our exhibits rotate from year to year which is always interesting to those who visit the museum each year. In recent years, due to the Internet and our own website, we have seen a significant increase in the number of inquiries from folks researching their Shrewsbury ancestry. All such requests are answered.

Your support helps keep the museum viable, interesting and accessible. Your dues and donations will not only be used for the upkeep and care of the museum building, but will also help in the preservation of our town's history for future generations. The SHS is an all-volunteer, non-profit organization.

Thanks for your support.

2018 MEMBERSHIP DUES

Please fill out this form and mail it with your check payable to the Shrewsbury Historical Society, Inc., c/o John Elwert, 499 Shunpike Rd., Cuttingsville, VT 05738.

Name _____	Individual	\$10
	Family	\$15
	Contributing	\$30
Address _____	Life (Individual/Couple)	\$125

Dues and donations are tax deductible.

Shrewsbury Historical Society, Inc.
5419 Route 103
Cuttingsville, Vermont 05738